



Corporate Presentation

Q1 2024

# West African Gold Developer



# DISCLAIMER

The information being released by the Cora Gold Limited (the "Company") today & attached to the RNS (the "Materials") are being released to provide additional information with respect to the business of the Company. The Materials are not intended to form, & shall not be treated as, the basis of any investment decision or any decision to purchase an interest in the Company. The Materials do not constitute a recommendation regarding the shares of the Company, nor should the Materials be considered as the giving of investment advice by the Company or any of its shareholders, directors, officers, agents, employees or advisers. The Materials do not constitute an offer to sell or an invitation for offers to purchase or acquire any securities or any of the business or assets described herein. The Company has provided the information in the Materials, which do not purport to be comprehensive & have not been fully verified by the Company, or any of their respective shareholders, directors, advisers, agents or affiliates. No representation or warranty, express or implied, is or will be made & no responsibility or liability is or will be accepted by the Company or by any of their respective officers, servants or agents or any other person as to or in relation to the accuracy or completeness of the Materials or the information or opinions contained herein or supplied herewith or any other written or oral information made available to any interested party or its advisers & no responsibility or liability is accepted for the accuracy or sufficiency of any of the information or opinions, for any errors, omissions or mis-statements, negligent or otherwise, or for any other communication, written or otherwise, made to anyone in, or supplied with, the Materials. In particular, no representation or warranty is given as to the achievement or reasonableness of any future projections, management estimates, prospects or returns. Certain statements within the Materials constitute forward looking statements. Such forward looking statements involve risks & other factors which may cause the actual results, achievements or performance expressed or implied by such forward looking statements.

Accordingly, neither the Company nor any of its respective shareholders, directors, advisers, agents or affiliates shall be liable for any direct, indirect or consequential loss or damage suffered by any person as a result of relying on any statement or omission in, or supplied with, the Materials or in any future communications in connection with your interest in the Company. The information set out in the Materials will not form the basis of any contract. The recipient agrees to keep confidential any written or oral information contained herein or otherwise made available in connection with the Company. The Materials must not be copied, reproduced, distributed or passed to others at any time. The Materials have been delivered to you for information only & upon the express understanding that such parties will use it only for the purpose set out above. The Company undertakes no obligation to provide the recipient with access to any additional information or to correct any inaccuracies herein which may become apparent.

Neither the Materials nor any copy of it may be (a) taken or transmitted into Australia, Canada, Japan, the Republic of Ireland, the Republic of South Africa or the United States of America (each a "Restricted Territory"), their territories or possessions; (b) distributed to any U.S. person (as defined in Regulation S under the United States Securities Act of 1933 (as amended)) or (c) distributed to any individual outside a Restricted Territory who is a resident thereof in any such case for the purpose of offer for sale or solicitation or invitation to buy or subscribe any securities or in the context where its distribution may be construed as such offer, solicitation or invitation, in any such case except in compliance with any applicable exemption. The distribution of the Materials in or to persons subject to other jurisdictions may be restricted by law & persons into whose possession this document comes should inform themselves about, & observe, any such restrictions. Any failure to comply with these restrictions may constitute a violation of the laws of the relevant jurisdiction.



# SNAPSHOT

Portfolio of prospective gold assets within two known gold belts in Mali & Senegal & located amongst multiple operational mines

## AT A GLANCE



AIM listed company advancing proven gold deposits including developing the Sanankoro Gold Project in the Yanfolila Gold Belt, south Mali, into an open pit oxide mine.



Takes its social and environmental responsibilities very seriously and is committed to ensuring its operations are as sustainable as possible.

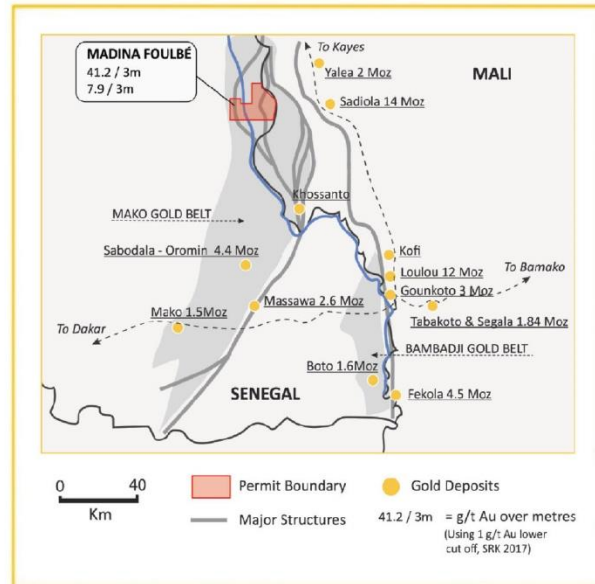


Team with proven track record in making multi-million-ounce gold discoveries in Africa, which have been developed into operating mines.

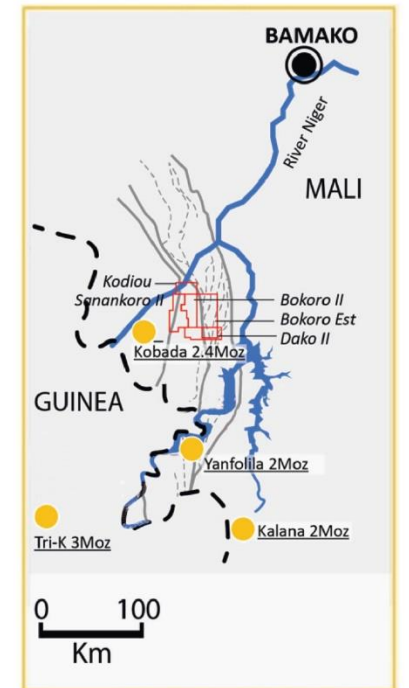
## KEY PROJECT

**SANANKORO GOLD PROJECT** — DFS & Optimised Project Economics show a 52.3% IRR & LOM free cash flow of US\$234m at a gold price of US\$1,750/oz.

### KENIEBA, WEST MALI / EAST SENEGAL



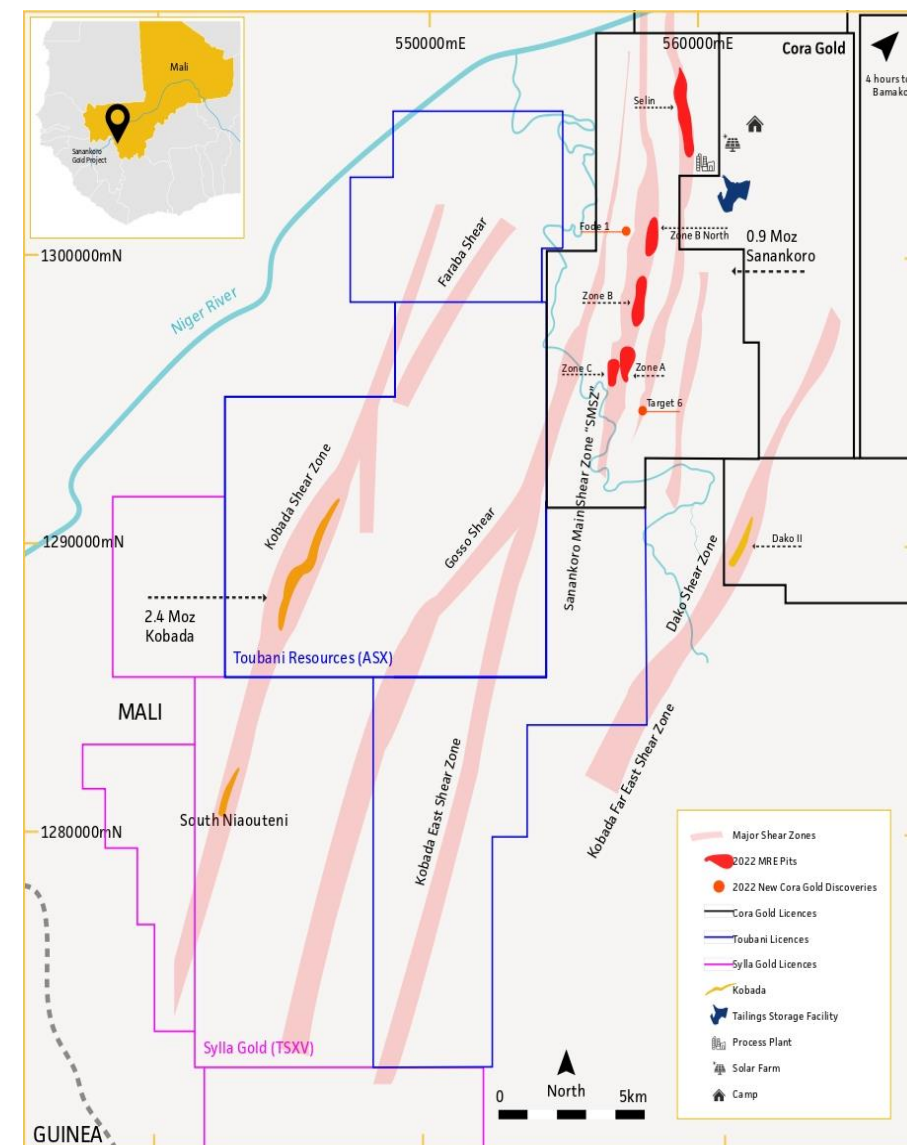
### SANANKORO, SOUTH MALI



# SANANKORO GOLD PROJECT

Advancing to mine construction

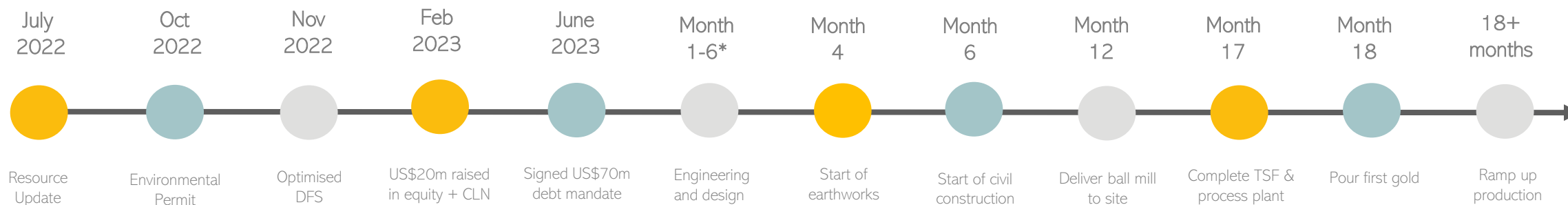
- Located in Yanfolila Belt, Southern Mali
- 1.5Mtpa conventional CIL and gravity processing plant from an open pit operation with low strip ratio oxide ore
- Delivers post tax & royalties (US\$1,750 gold price):
  - 52.3% IRR
  - 1.2 years payback period
  - 6.8 years Reserve life
  - +80koz in year 1, c.60koz/year average production
  - US\$997/oz AISC
  - US\$90m capex incl. contingency & mining pre-production costs
- Environmental permit received



# SANANKORO STRATEGY & TIMELINE

## STRATEGY

- 1 Complete permitting & financing as quickly as possible to commence construction at Sanankoro for a conventional CIL plant
- 2 Start delivering strong free cash flow (FCF) from low strip ratio oxide ounces at Sanankoro once in production
- 3 Drive organic growth from infill drilling existing Inferred resources and targeting significant exploration potential



\*Subject to lifting of the Government's permit moratorium



# OPERATIONAL READINESS

Poised to fast-track mine construction

- Commenced tendering process for Sanankoro, July 2023
  - Front-End Engineering and Design (FEED)
  - Hybrid power solution & mine camp construction
  - Appointed senior management team: Lourens Steenekamp as Project Manager, Frikkie Fourie as Mining Consultant, & Murray Paterson as Head of Geology
- Signed US\$70m debt Mandate Letter with Atlantique Finance to support Sanankoro construction, June 2023





# SANANKORO ECONOMICS

1.5Mtpa throughput plant

Reserves only, post-tax	US\$1,750	US\$1,650
First full year production - oz	84,860	84,860
First full year FCF – US\$m	71.8	64.2
LoM avg. production/year – oz Au	56,000	56,000
LoM Grade – g/t Au	1.3	1.3
Project CAPEX (incl. contingency) – US\$m	90	90
Strip ratio – waste:ore	4.6:1	4.6:1
All in Sustaining Costs – US\$/oz	997	992
LoM FCF – US\$m	234	207
IRR - %	52.3	43.6

The mine's economics improve when pit optimised resources (including inferred) are added to mine plan @ US\$1,750 Au:

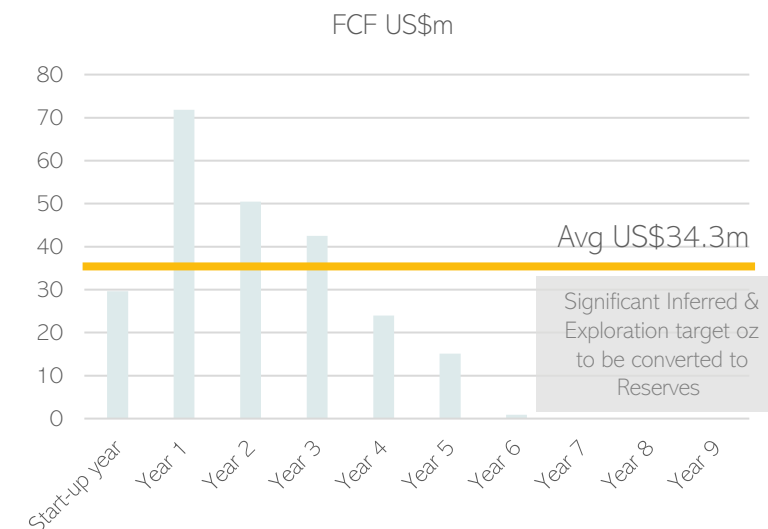
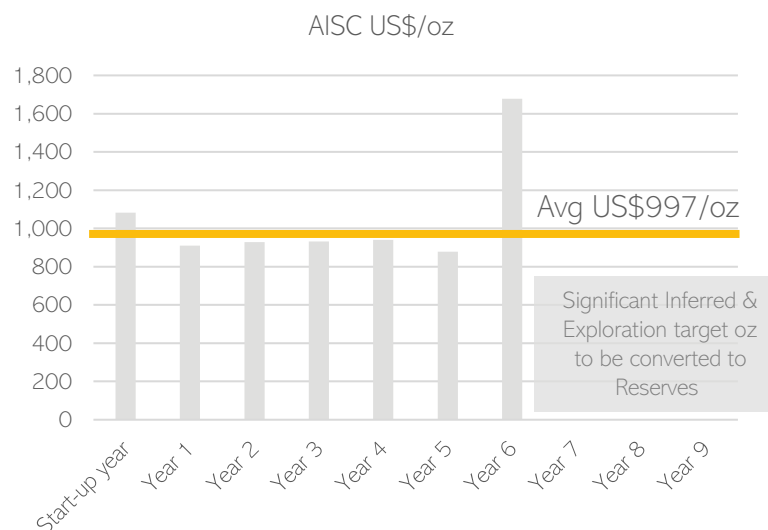
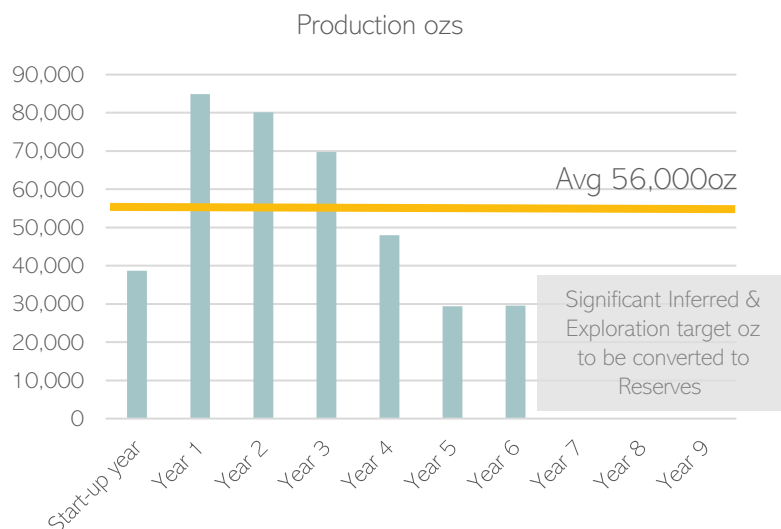
**+US\$76m**

additional FCF

**+2.5 years**

additional mine life

# STRONG EARLY PRODUCTION & CASHFLOW (US\$1,750 gold price & post tax)



- Up to 1.37Moz of exploration target; 90% in oxide & transitional to be targeted with future drilling
- 121koz of additional pit optimised resources to be converted to Reserves would lower strip ratio from an average of 4.61:1 to an average 3.78:1
- Grade in start-up year of 1.6 g/t Au & an average of 1.3 g/t Au LoM



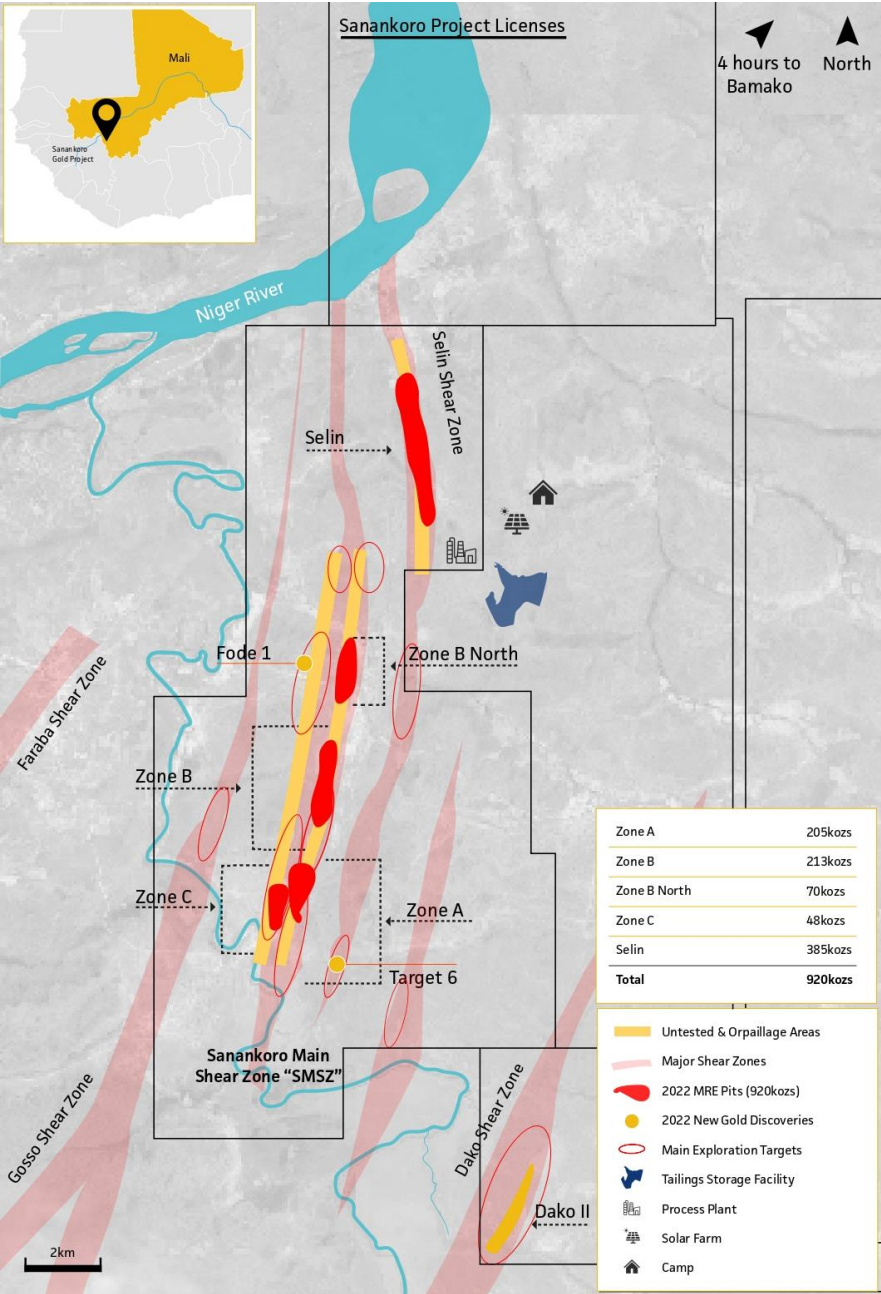


# CAPEX & OPEX BREAKDOWN

- Pre-production capex of US\$90m (incl. contingency & pre-production mining)
- Design includes a hybrid power option incorporating solar power
- Contractor mining planned from the start of operations

OPEX	US\$/T
Mining cost	2.8
Mining total cost	15.8
Process & maintenance	10
G&A	3.1
C1 costs	28.9
AISC	37.5

CAPITAL COST	US\$M
Plant costs	50.4
EPCM & insurance	5.5
Mining pre-production	8.9
TSF	12.7
Other costs (infrastructure, power etc)	12.5
Total	90



# MAIDEN RESERVES

21 November 2022

Area	Mineral Reserve classification	Material type	Tonnes (kt)	Grade (g/t Au)	Metal content (koz)
Selin	Probable	Oxide	3,767	1.27	154.2
	Probable	Transitional	519	2.38	39.8
Total – Selin	Probable	All zones	4,287	1.41	194.0
Zone A	Probable	Oxide	2,752	1.32	116.8
	Probable	Transitional	-	-	-
Total – Zone A	Probable	All zones	2,752	1.32	116.8
Zone B	Probable	Oxide	3,048	1.13	111.0
	Probable	Transitional	8	1.54	0.4
Total - Zone B	Probable	All zones	3,056	1.13	111.5
GRAND TOTAL	Probable	All zones	10,094	1.30	422.2



# MINERAL RESOURCE ESTIMATE

Completed by CSA Global (UK) Ltd, 19 July 2022

- +14% increase in total ounces from previous MRE in November 2021
- Significant upgrade to Indicated category using a 0.4g/t cut off & a US\$1,900/oz optimised pit shell
- 22% increase in oxide Indicated Mineral Resources to 509koz
- Comprises 24.9Mt of material at a grade of 1.15 g/t Au, of which 16.1Mt are Indicated Mineral Resources & 8.7Mt are Inferred Mineral Resources for a total 920koz Au
  - 657koz @ 1.27 g/t Au Indicated category
  - 263koz @ 0.94 g/t Au Inferred category
- MRE updated following the completion of a limited drill programme of 6,922m of reverse circulation (RC) and 897m of air core drilling

## Mineral Resource Estimate

Area	Classification	Tonnes (kt)	Grade (g/t Au)	Content (koz)
Zone A	Indicated	3,977	1.31	168
	Inferred	1,453	0.80	37
	<b>Total</b>	<b>5,430</b>	<b>1.17</b>	<b>205</b>
Zone B	Indicated	3,034	1.20	117
	Inferred	3,962	0.75	96
	<b>Total</b>	<b>6,996</b>	<b>0.95</b>	<b>213</b>
Selin	Indicated	7,466	1.33	320
	Inferred	1,466	1.38	65
	<b>Total</b>	<b>8,932</b>	<b>1.34</b>	<b>385</b>
Zone B North	Indicated	1,661	0.97	52
	Inferred	513	1.10	18
	<b>Total</b>	<b>2,174</b>	<b>1.00</b>	<b>70</b>
Zone C	Inferred	1,338	1.11	48
	<b>Total</b>	<b>1,338</b>	<b>1.11</b>	<b>48</b>
All Zones	Indicated	16,138	1.27	657
	Inferred	8,732	0.94	263
	<b>Total</b>	<b>24,870</b>	<b>1.15</b>	<b>920</b>



# EXPLORATION TARGET

Exploration Target\* based on drill data estimated to contain between 26.0Mt & 35.2Mt with a grade range of 0.58 - 1.21 g/t Au for a potential content of 490koz Au – 1.37Moz Au

Potential to increase content  
**+150%**  
to a total  
2.33Moz Au

3 of the 12 areas are responsible  
for  
**+50%**  
of the target

Oxide & transitional material make  
up  
**+90%**  
of the target

Focus on brownfield areas  
**within 8km**  
of existing  
Mineral Resource



\*Completed by independent consultancy CSA Global which also calculated the MRE

# SAPROLITE SOFT ROCK

True oxide gold

## Peer Group

- No soft rock peers in London
- Nampala – soft rock & transitional
- Siguiri & Sadiola – now in hard rock

## Characteristics

- Heavily weathered rock
- Deep weathering profile
- Mine life dominated by soft rock
- Processing plant designed for mainly soft material

## Lower Unit Costs

- Mining cost lower – no drill & blast
- Processing cost lower – limited crushing
- Capex & maintenance lower than fresh rock mines

## Comparator

- Robex (TSX.V – RBX; Nampala) is a technical comparator to Sanankoro from an ore & metallurgy perspective - below is a 3-year snapshot of its performance:

	FY20	FY21	FY22
Gold production	50,3koz	46,6koz	46.7koz
Grade (g/t Au)	0.93	0.81	0.82
Recovery	89.1%	91.4%	83.3%
AISC (US\$ per ounce sold)*	950	1,501	1,457
Average m cap (£)**	113.0	144.7	130.2

Siguiri - AngloGold Ashanti

(Guinea)



Sanankoro – Cora

(Mali)



# OXIDE ORE

Material at Sanankoro does not become hard rock until depths of +120m





# ESG

## PERMITTING

Environmental & Social Impact Assessment (ESIA) submitted July 2022 to Direction Nationale de l'Assainissement et du Contrôle des Pollutions et des Nuisances ('DNACPN'), the governing administration for environmental matters in Mali

Environmental Permit awarded October 2022, recognising Cora's high environmental standards

## COMMUNITY ENGAGEMENT

Committed to operating in ways that engage positively with the local communities & actively involved in programmes focused on alternative livelihoods, healthcare, & education, which include:

- Financing a new water well at the Dako community village garden
- Donating to the health centre & giving a solar power kit & battery to Sanankoro village
- Donating market garden equipment & founding a village saving & credit association at the community of Faragouagnia
- Holding a general assembly at the Sanankoro camp to address questions on the potential future developments at Sanankoro from the surrounding communities



Delivering garden equipment to the Dako community



Established a market garden at Sanankoro village



Delivering garden equipment to the community of Farangouania

# MANAGEMENT



**Bert Monro**

CEO & Director

- +14 years' experience within the natural resources industry
- Previously worked for HUM advancing its +6Moz of gold resources in West Africa & operational gold mine in Mali



**Craig Banfield**

CFO & Company Secretary

- +25 years' experience in finance roles in UK and TSX listed resource focused companies
- Fellow of The Institute of Chartered Accountants in England & Wales



**Lourens Steenekamp**

Project Director

- An experienced mining professional with a career spanning over three decades
- Starting with Gold Fields in the early 1990s, he has recently held a project manager position at both Resolute Mining in Mali, and Perseus Mining in Cote d'Ivoire



**Murray Paterson**

Head of Geology

- Accomplished geologist with extensive experience of mine start-ups in West Africa
- Has held significant roles for both AngloGold Ashanti and Randgold in Mali – Managing significant drill programmes, overseeing technical studies



**Siaka Koumare**

Country Manager

- An exploration geologist with over 25 years' experience in West Africa
- Has been involved in mineral exploration programmes for gold in West Africa & has worked for a number of successful Canadian & British companies in Mali, Guinea, Sierra Leone & Senegal



**Djibril Sanogo**

ESG Manager

- +15 years' experience overseeing environmental and community management in Mali
- Previously worked for several large gold mining companies including AngloGold Ashanti and Resolute Mining



**Frikkie Fourie**

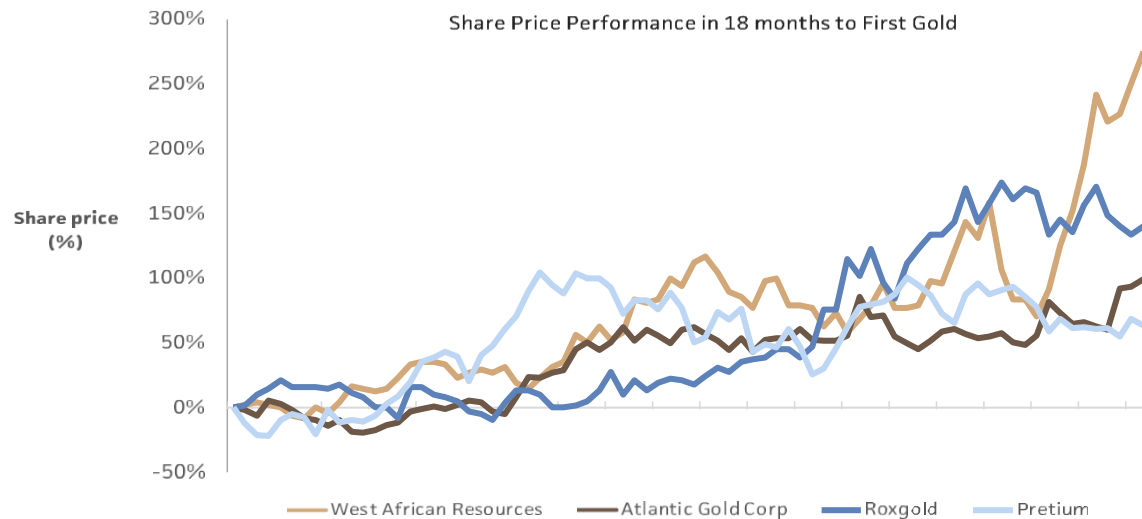
Mining Consultant

- A mining consultant with extensive experience in Africa
- Joined Galiano Gold in 2016 where he was promoted to Vice President of Mining

# INVESTMENT CASE

## New Producer Outperformance

Share appreciation leading to production



### Clear Path



Focus on early production & cashflow

### Upside



Exploration Target highlights significant further resources

### New Producer



Share appreciation leading to production

### Strong Support



Diverse investor base including high profile resource investors

### Recognised Team



Proven expertise to discover & develop mining opportunities

### Robust Market



Strong gold price outlook





# CORPORATE

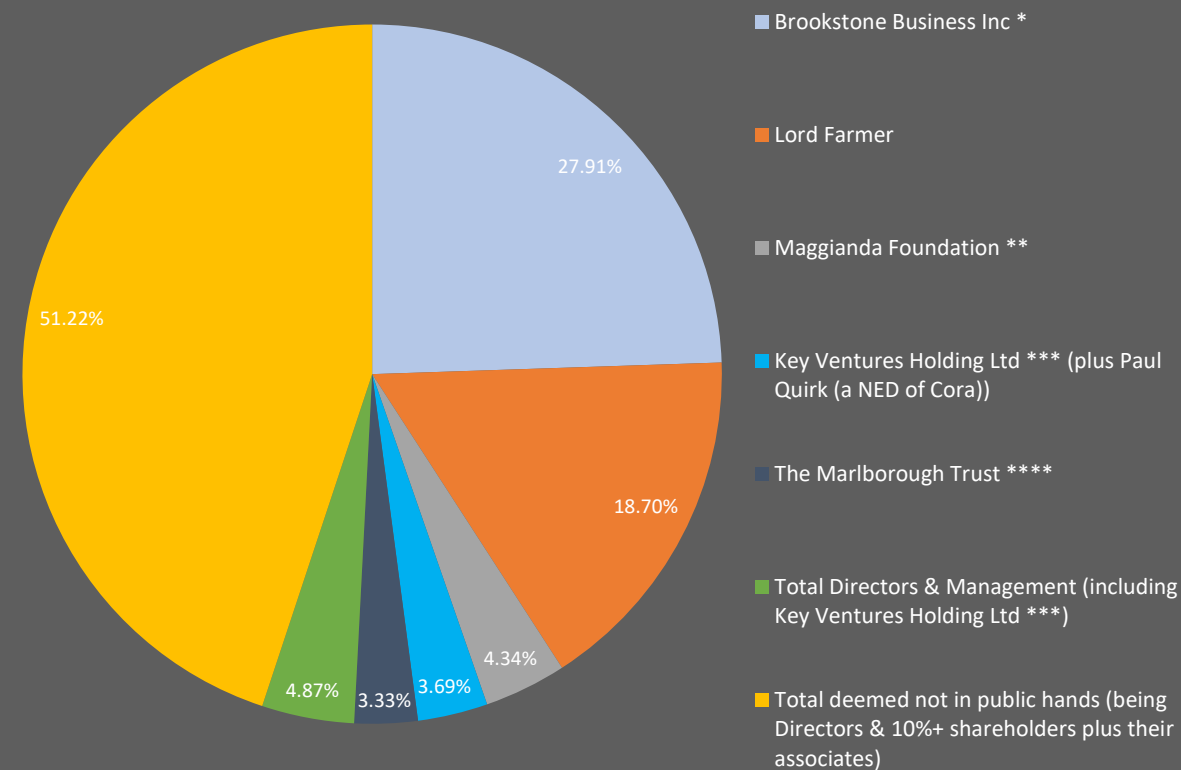
## SNAPSHOT AT 12 FEBRUARY 2024

Market Cap	£8.14m
Share Price	2.20p
52 Week Range	2.00p-4.70p
Nomad & Broker	Cavendish

## SHARE PRICE PERFORMANCE



## SIGNIFICANT SHAREHOLDERS



\* wholly owned & controlled by First Island Trust Company Ltd as Trustee of The Nodo Trust, being a discretionary trust with a broad class of potential beneficiaries. Patrick Quirk, father of Paul Quirk (a Non-Executive Director of Cora), is a potential beneficiary of The Nodo Trust.  
\*\* a non-grantor trust of which Jeremy Block is the first beneficiary.  
\*\*\* wholly owned and controlled by First Island Trust Company Ltd as Trustee of The Sunnega Trust, being a discretionary trust of which Paul Quirk (a NED of Cora) is a potential beneficiary.  
\*\*\*\* a discretionary trust with a broad class of potential beneficiaries.

# APPENDIX







# OPERATING IN MALI

Fourth largest gold producing country in Africa

- Highly developed & active mining culture
- Major international companies operate in the country including Barrick, B2Gold, Resolute, & AngloGold Ashanti
- Industrial gold production in Mali is building:
  - 2021 – 63.4 tonnes
  - 2022 – 66.2 tonnes
  - 2023 estimated – 66.7 tonnes
- Gold mining accounted for c.9% of GDP in 2022 & provided more than half of total tax revenues last year
- State revenue from gold mining companies in Mali rose 35% year on year in 2022 to a record \$1.3 billion
- New mining minister, Amadou Keita, was appointed in July 2023 and a new mining code was passed by Parliament in August 2023
- Following these developments, it is expected the permitting moratorium will be lifted shortly

West Africa is the fastest growing & largest gold producing region, ranking 1st for discoveries over the past decade

**+80%**

production increase in West Africa over the last decade

**14%**

of global gold production in 2021 was in West Africa

**6 out of top 10**

senior gold producers have a presence in West Africa

**67Moz**

discovered in West Africa over past decade

**7.4%**

of global exploration budget is spent in West Africa

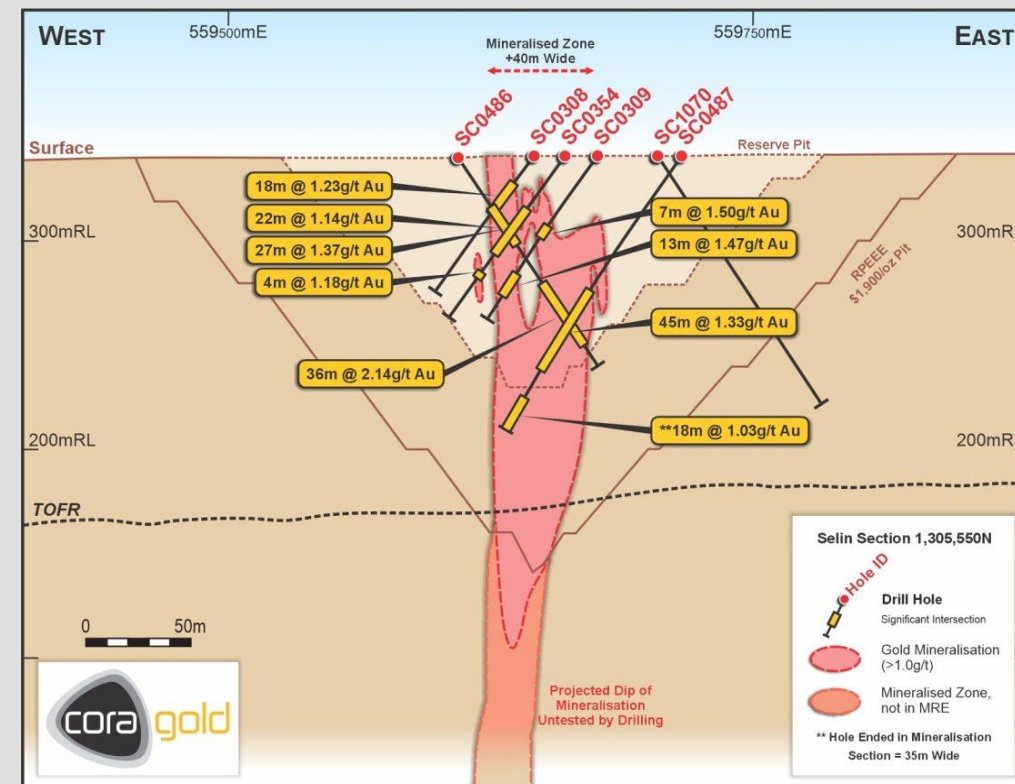
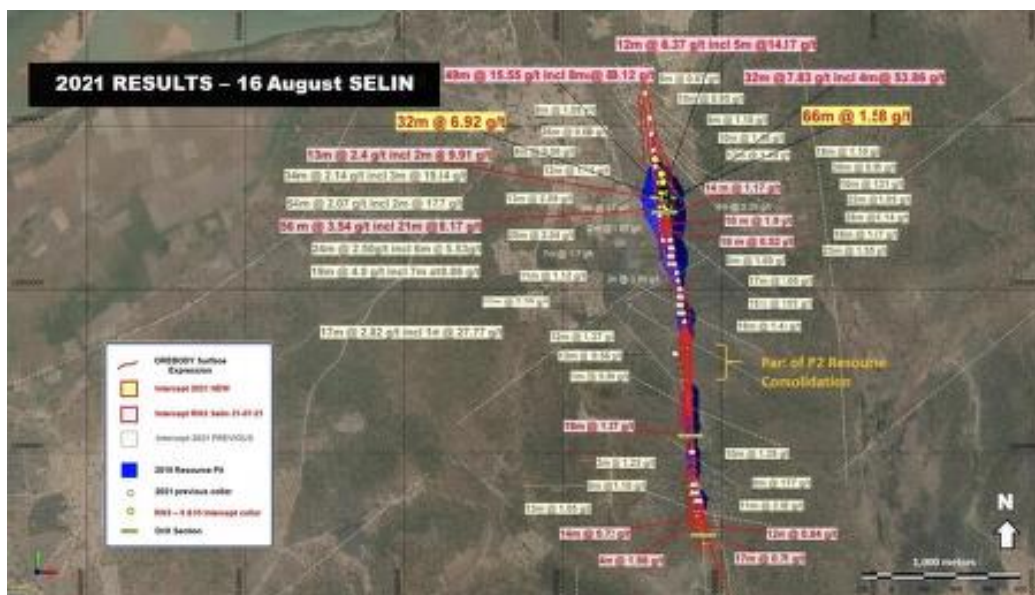
**+US\$6bn**

spent in West Africa during the last decade

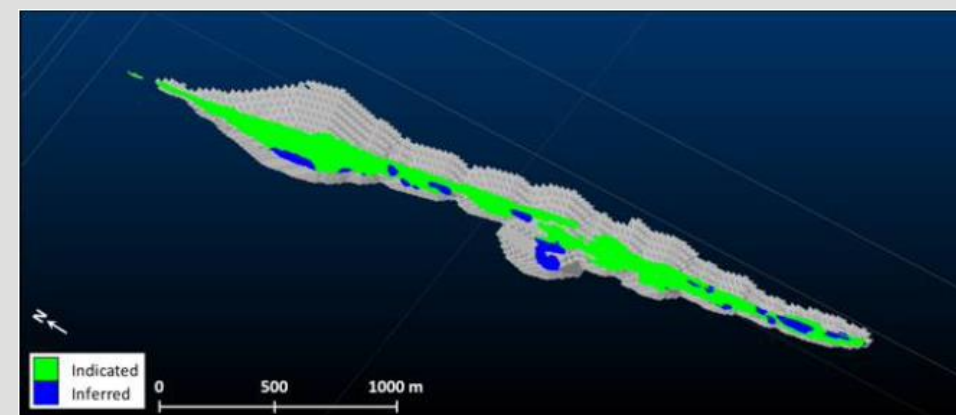


# SANANKORO: SELIN

- Drilling delivered 550m of increased resource length to maiden MRE – remains open in all directions
- Positive results from the middle of Selin where there was previously a gap between two pit shells
- Presence of oxide gold mineralisation of potentially economic grades & widths confirmed across prospect
- Best oxide intercepts returned from Selin South
- Two new discoveries, Fode 1 & Target 6, both in proximity to existing Mineral Resources



Cross-section at Selin showing mineralisation relative to drilling

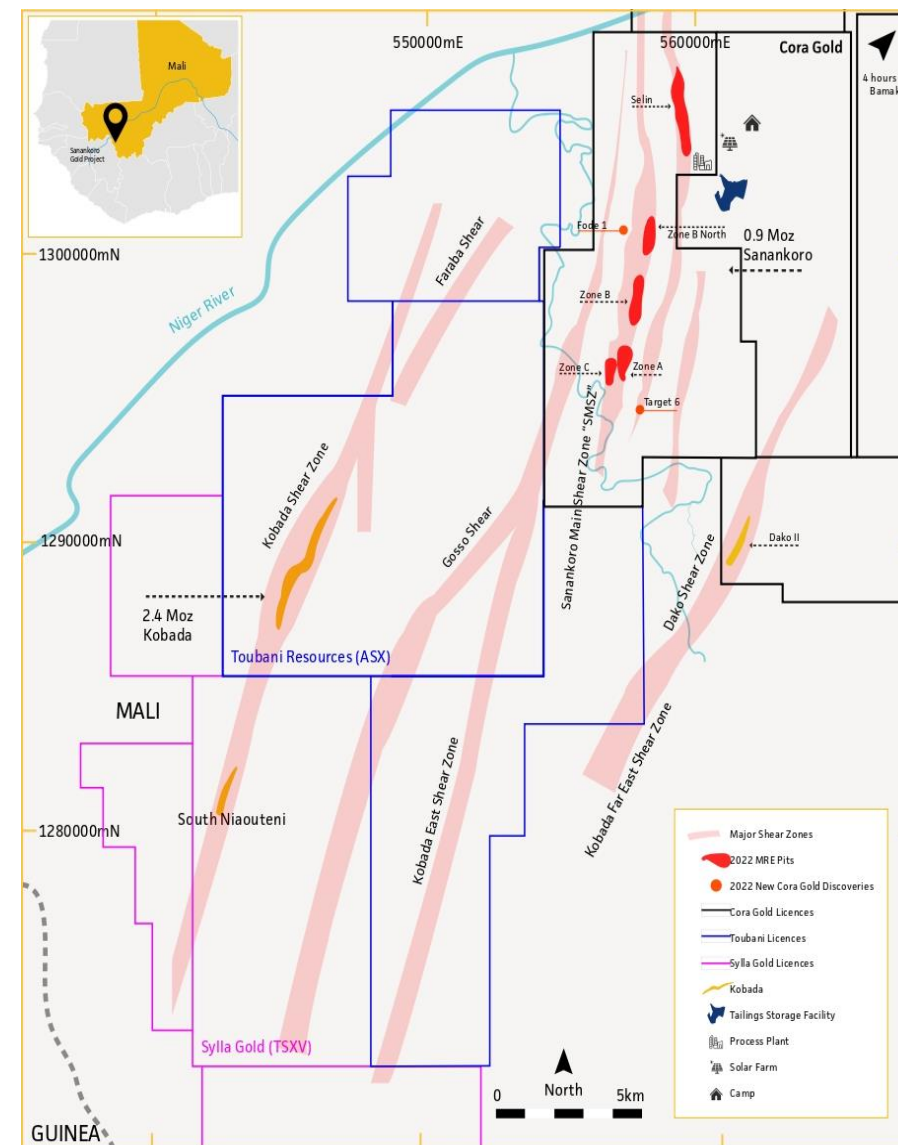


# 2021-2022 DRILL CAMPAIGN

Focused on resource growth & upgrading of existing Inferred resources to Measured & Indicated

- 50,000m drilled across two drill campaigns
- Updated MRE delivered July 2022
- Top results from 2021-2022 drilling:

49m @ 15.55 g/t	incl 8m @ 89.12 g/t
19m @ 31.56 g/t	incl 6m @ 95 g/t
2m @ 146.43 g/t	
32m @ 7.83 g/t	incl 4m @ 53.86 g/t
32m @ 6.92 g/t	
56m @ 3.54 g/t	incl 21m @ 8.17 g/t
8m @ 19.11 g/t	
32m @ 4.43 g/t	
21m @ 5.75 g/t	
14m @ 8.54 g/t	
12m @ 7.61 g/t	
13m @ 4.97 g/t	



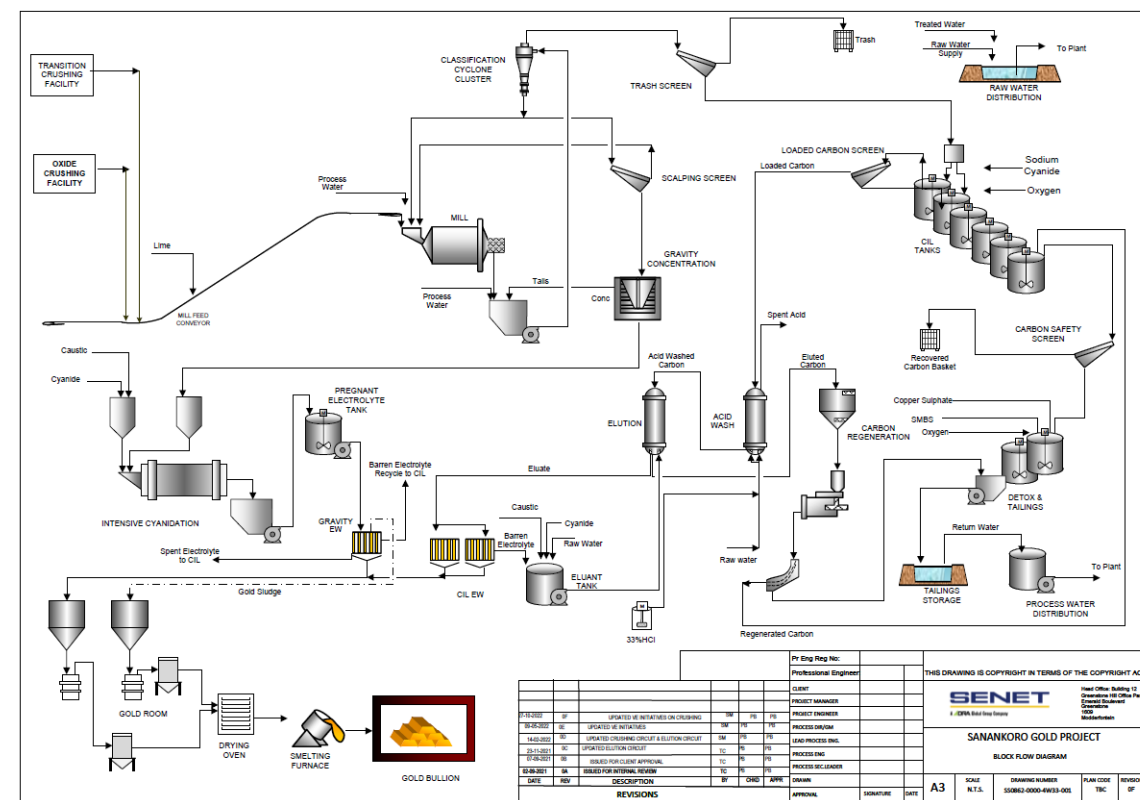
## DETAILED CAPEX

Capital items	US\$'000
Civil works	5,122
Earth works	3,513
Machinery & equipment (a)	31,704
Infrastructure	1,194
Transport	5,432
First fills	868
Mine camp	2,206
ESIA channels	2,859
Project management (b)	4,500
Insurance & guarantees	650
Generator / thermal plant	250
Tailings storage facility (TSF) (c)	11,895
Resettlement action plan	1,000
Owner's costs	3,814
Mining pre-production	8,941
Contingency (d)	5,838
<b>Total pre-production capital</b>	<b>89,787</b>
Sustaining & closure capital (e)	57,868
<b>Total LOM capital</b>	<b>147,655</b>

As per DFS: (a) US\$34,204k; (b) US\$10,028k; (c) US\$20,688k; (d) US\$7,750k; (e) US\$59,857k

# FLOW SHEET

## Conventional gravity & CL circuit



# NON-EXECUTIVE DIRECTORS

Track record of discovery & development in Africa



**Ed Bowie**

NED & Chairman

- +24 years' experience within the wider natural resources industry, in June 2023 he was announced as the new CEO of Beowulf Mining
- Started his career with SAMAX Gold in Tanzania before going on to work in equity research & corporate finance role



**Paul Quirk**

NED

- +15 years' operational experience in mining focused in Africa including as a Country Manager of MPD Congo SA in the Republic of Congo
- Partner at Lionhead & experience in financing projects



**David Pelham**

NED

- A mineral geologist with +35 years global exploration experience
- He has overseen the discovery & early evaluation of the +6Moz Chirano Gold Mine in Ghana, as well as Hummingbird's 4.2Moz Dugbe gold deposit in Liberia



**Andrew Chubb**

NED

- Since 2014, Andrew has worked as a Partner at natural resources investment bank Hannam & Partners as Head of Mining
- He is also a Director at Metals Exploration Plc





Bert Monro, CEO  
[ceo@coragold.com](mailto:ceo@coragold.com)

[www.coragold.com](http://www.coragold.com)  
[@coragold](#)